

PROJECT: BP2.R027

REFERENCE: SF-530168

CONTENTS

<u>SHEET NO.</u>	<u>DESCRIPTION</u>
1	TITLE SHEET
2	LEGEND (SOIL & ROCK)
3	SITE PLAN
4	PROFILE
5-6	BORE LOGS

STATE OF NORTH CAROLINA  
DEPARTMENT OF TRANSPORTATION  
DIVISION OF HIGHWAYS  
GEOTECHNICAL ENGINEERING UNIT

STRUCTURE  
SUBSURFACE INVESTIGATION

COUNTY LENOIR

PROJECT DESCRIPTION BRIDGE NO.168 ON -L-  
(SR 1578) OVER BRIERY RUN

STATE	STATE PROJECT REFERENCE NO.	SHEET NO.	TOTAL SHEETS
N.C.	SF-530168	1	6

CAUTION NOTICE

THE SUBSURFACE INFORMATION AND THE SUBSURFACE INVESTIGATION ON WHICH IT IS BASED WERE MADE FOR THE PURPOSE OF STUDY, PLANNING AND DESIGN, AND NOT FOR CONSTRUCTION OR PAY PURPOSES. THE VARIOUS FIELD BORING LOGS, ROCK CORES AND SOIL TEST DATA AVAILABLE MAY BE REVIEWED OR INSPECTED IN RALEIGH BY CONTACTING THE N.C. DEPARTMENT OF TRANSPORTATION, GEOTECHNICAL ENGINEERING UNIT AT (919) 707-6850. THE SUBSURFACE PLANS AND REPORTS, FIELD BORING LOGS, ROCK CORES AND SOIL TEST DATA ARE NOT PART OF THE CONTRACT.

GENERAL SOIL AND ROCK STRATA DESCRIPTIONS AND INDICATED BOUNDARIES ARE BASED ON A GEOTECHNICAL INTERPRETATION OF ALL AVAILABLE SUBSURFACE DATA AND MAY NOT NECESSARILY REFLECT THE ACTUAL SUBSURFACE CONDITIONS BETWEEN BORINGS OR BETWEEN SAMPLED STRATA WITHIN THE BOREHOLE. THE LABORATORY SAMPLE DATA AND THE IN SITU (IN-PLACE) TEST DATA CAN BE RELIED ON ONLY TO THE DEGREE OF RELIABILITY INHERENT IN THE STANDARD TEST METHOD. THE OBSERVED WATER LEVELS OR SOIL MOISTURE CONDITIONS INDICATED IN THE SUBSURFACE INVESTIGATIONS ARE AS RECORDED AT THE TIME OF THE INVESTIGATION. THESE WATER LEVELS OR SOIL MOISTURE CONDITIONS MAY VARY CONSIDERABLY WITH TIME ACCORDING TO CLIMATIC CONDITIONS INCLUDING TEMPERATURES, PRECIPITATION AND WIND, AS WELL AS OTHER NON-CLIMATIC FACTORS.

THE BIDDER OR CONTRACTOR IS CAUTIONED THAT DETAILS SHOWN ON THE SUBSURFACE PLANS ARE PRELIMINARY ONLY AND IN MANY CASES THE FINAL DESIGN DETAILS ARE DIFFERENT. FOR BIDDING AND CONSTRUCTION PURPOSES, REFER TO THE CONSTRUCTION PLANS AND DOCUMENTS FOR FINAL DESIGN INFORMATION ON THIS PROJECT. THE DEPARTMENT DOES NOT WARRANT OR GUARANTEE THE SUFFICIENCY OR ACCURACY OF THE INVESTIGATION MADE, NOR THE INTERPRETATIONS MADE, OR OPINION OF THE DEPARTMENT AS TO THE TYPE OF MATERIALS AND CONDITIONS TO BE ENCOUNTERED. THE BIDDER OR CONTRACTOR IS CAUTIONED TO PERFORM INDEPENDENT SUBSURFACE INVESTIGATIONS AND MAKE INTERPRETATIONS AS NECESSARY TO CONFIRM CONDITIONS ENCOUNTERED ON THE PROJECT. THE CONTRACTOR SHALL HAVE NO CLAIM FOR ADDITIONAL COMPENSATION OR FOR AN EXTENSION OF TIME FOR ANY REASON RESULTING FROM THE ACTUAL CONDITIONS ENCOUNTERED AT THE SITE DIFFERING FROM THOSE INDICATED IN THE SUBSURFACE INFORMATION.

- NOTES:
- THE INFORMATION CONTAINED HEREIN IS NOT IMPLIED OR GUARANTEED BY THE N.C. DEPARTMENT OF TRANSPORTATION AS ACCURATE NOR IS IT CONSIDERED PART OF THE PLANS, SPECIFICATIONS OR CONTRACT FOR THE PROJECT.
  - BY HAVING REQUESTED THIS INFORMATION, THE CONTRACTOR SPECIFICALLY WAIVES ANY CLAIMS FOR INCREASED COMPENSATION OR EXTENSION OF TIME BASED ON DIFFERENCES BETWEEN THE CONDITIONS INDICATED HEREIN AND THE ACTUAL CONDITIONS AT THE PROJECT SITE.

PERSONNEL

S.N. ZIMARINO

C.M. WALKER

J.M EDMONDSON

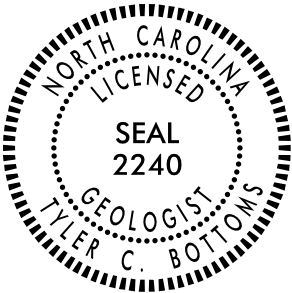
INVESTIGATED BY T.C. BOTTOMS

DRAWN BY T.W. MILLER

CHECKED BY D.N. ARGENBRIGHT

SUBMITTED BY D.N. ARGENBRIGHT

DATE APRIL 2024



DocuSigned by:

Tyler Bottoms05/30/2024

48A2D3BD08CF4A6...

SIGNATURE

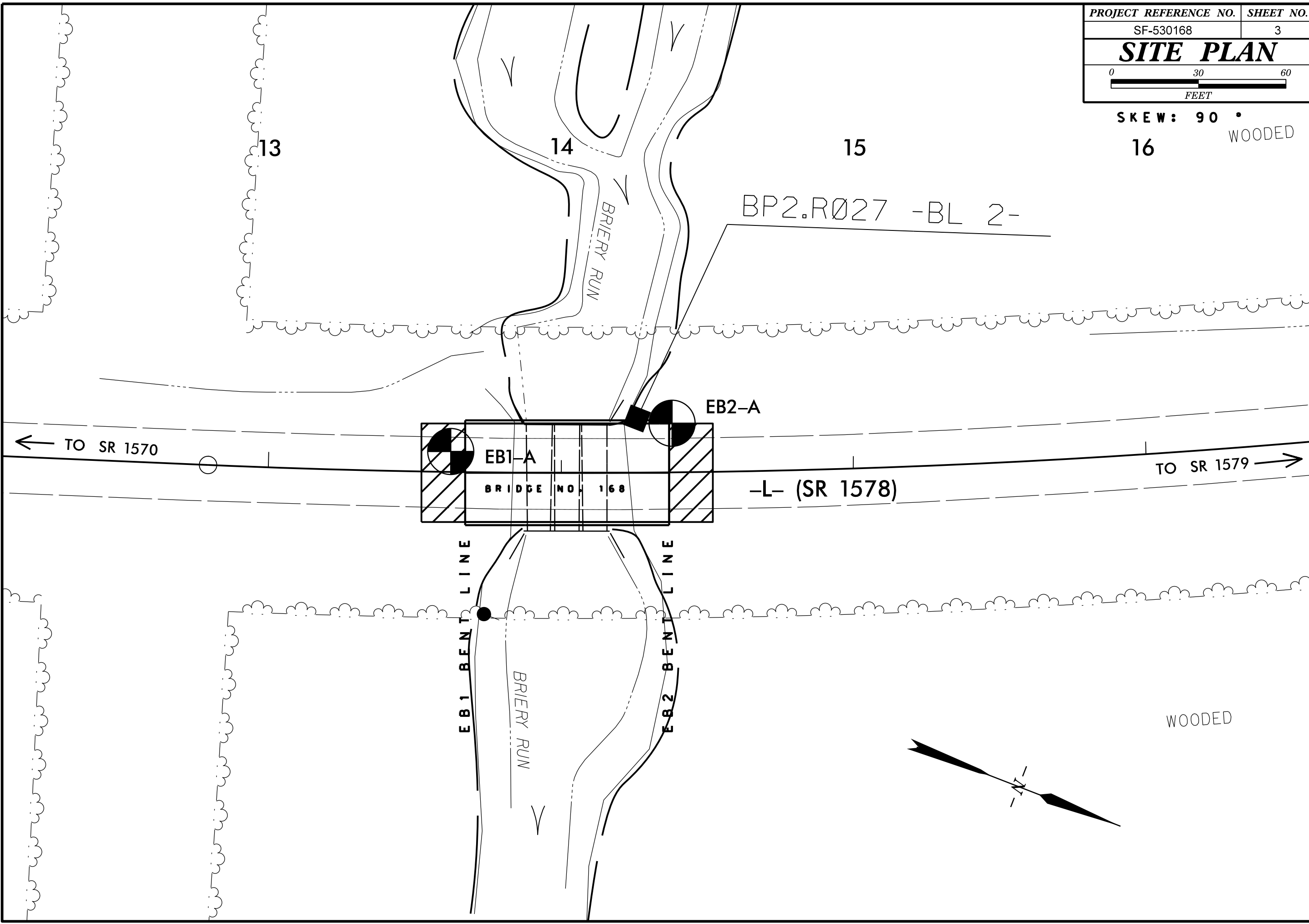
DATE

DOCUMENT NOT CONSIDERED FINAL  
UNLESS ALL SIGNATURES COMPLETED



PROJECT REFERENCE NO.	SHEET NO.
SF-530168	3
SITE PLAN	
<div><div>03060</div><div>FEET</div></div>	

SK EW: 90 °  
16 WOODED

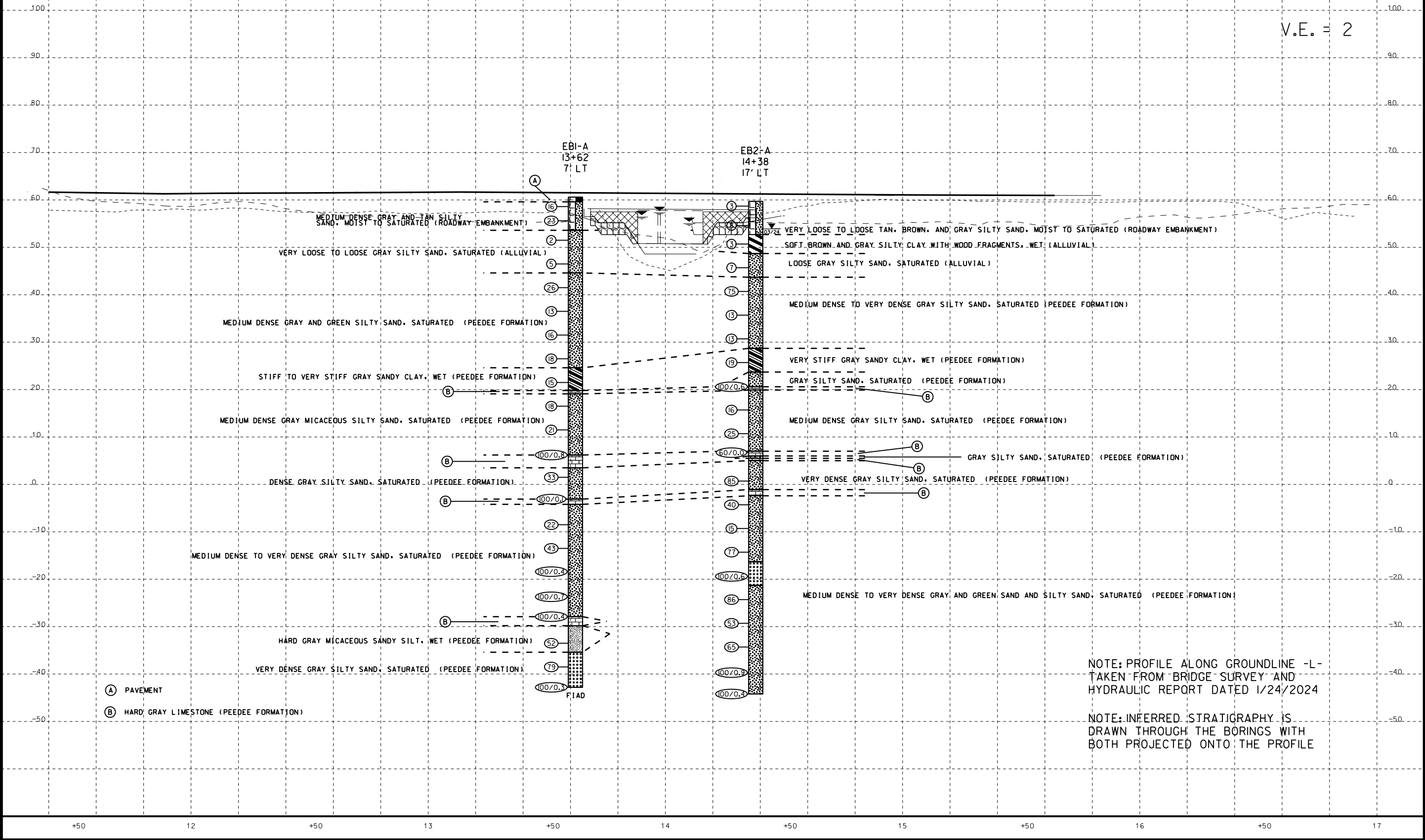


5/14/99

PROJECT REFERENCE NO. <b>SF-530168</b>		SHEET NO. <b>4</b>
ROADWAY DESIGN ENGINEER	HYDRAULICS ENGINEER	
<b>INCOMPLETE PLANS</b> DO NOT USE FOR R/W ACQUISITION		
<b>DOCUMENT NOT CONSIDERED FINAL UNLESS ALL SIGNATURES COMPLETED</b>		


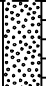
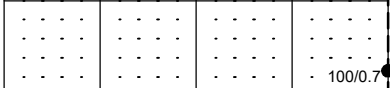
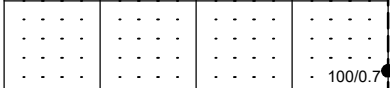
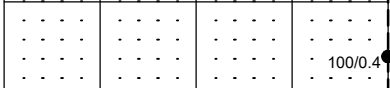
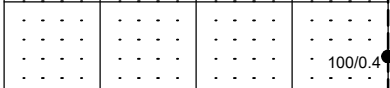
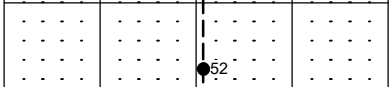
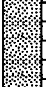
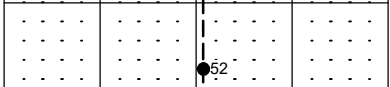
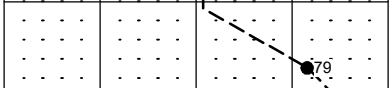
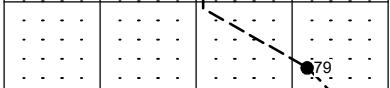
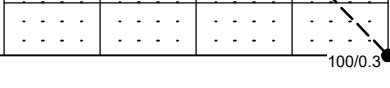
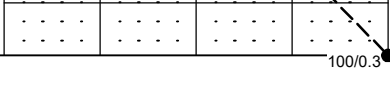
# PROFILE THROUGH BORINGS PROJECTED ALONG -L-

V.E. = 2

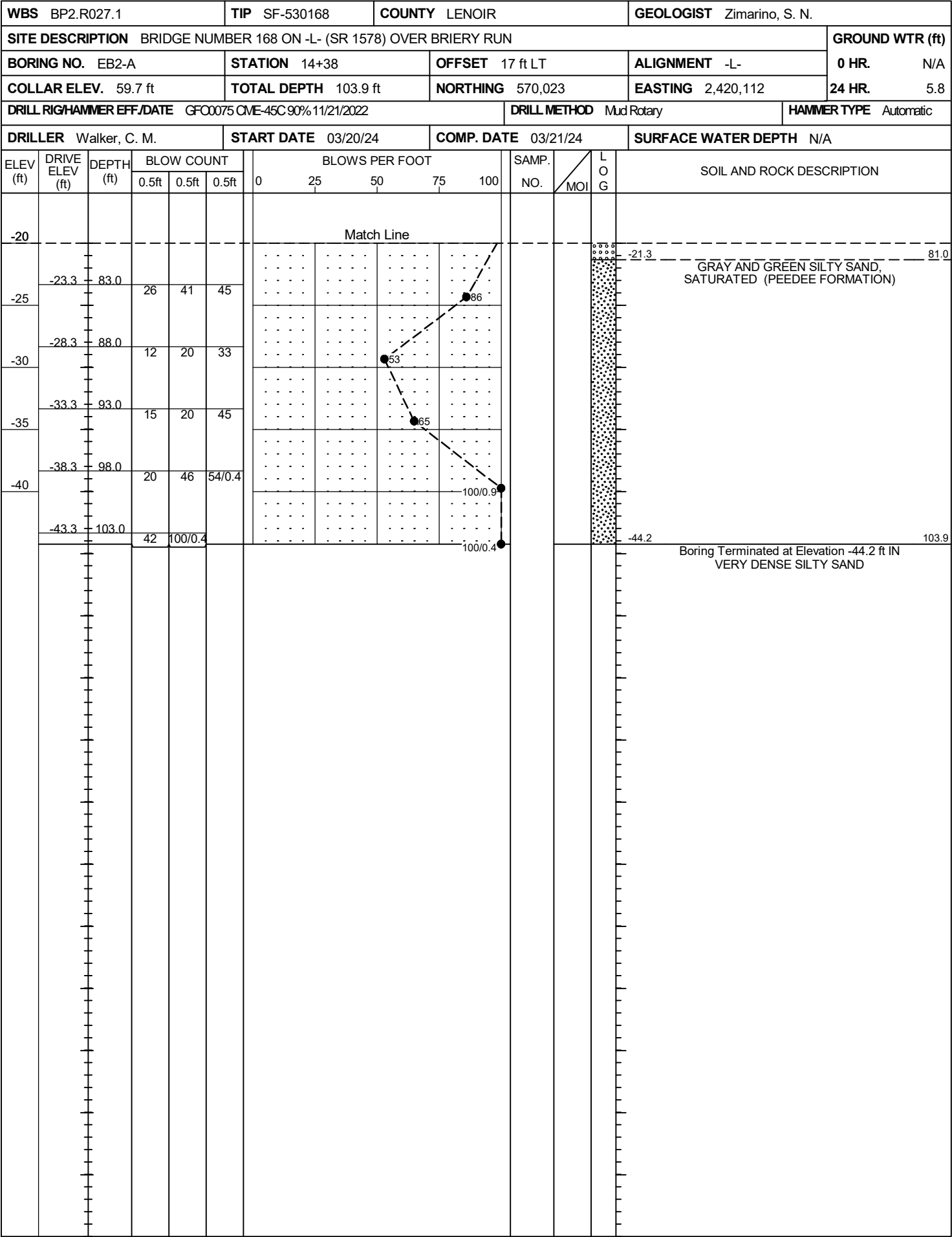
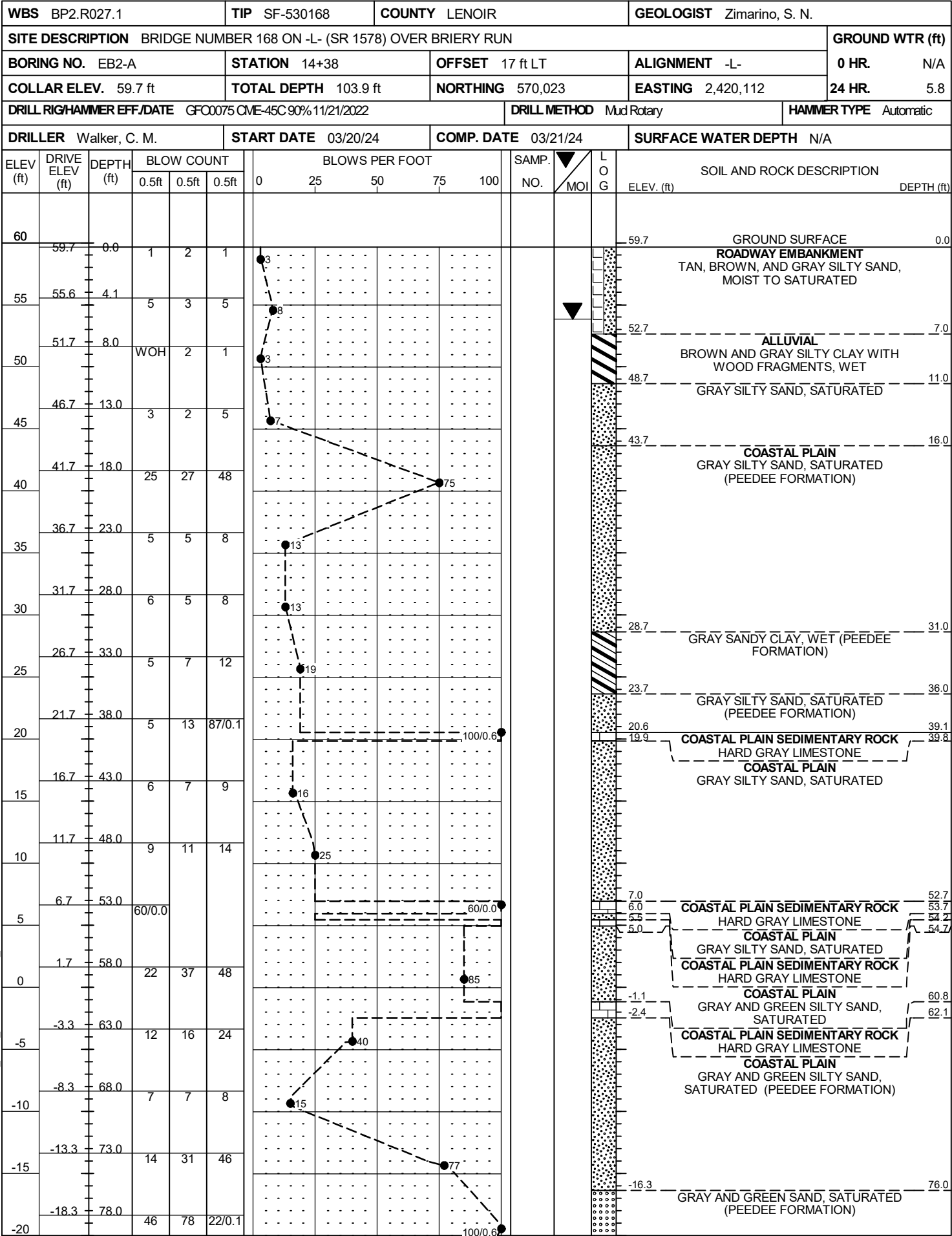


02-APR-2024 12:19  
S:\ERQ\Greenville  
Investigation\TIP SF530168.GEO.BRDG\CADD.GEOTECH\Plan\Prof\SF530168.GEO.BRDG.PFL.dgn  
\$\$\$\$\$

WCDOT BORE DOUBLE SF530168 GEO BRDG.GPJ NC DOT.GDT 4/2/24

WBS BP2.R027.1				TIP SF-530168				COUNTY LENOIR				GEOLOGIST Zimarino, S. N.					
SITE DESCRIPTION BRIDGE NUMBER 168 ON -L- (SR 1578) OVER BRIERY RUN												GROUND WTR (ft)					
BORING NO. EB1-A				STATION 13+62				OFFSET 7 ft LT				ALIGNMENT -L-				0 HR. N/A	
COLLAR ELEV. 60.6 ft				TOTAL DEPTH 103.4 ft				NORTHING 569,956				EASTING 2,420,149				24 HR. FIAD	
DRILL RIG/HAMMER EFF./DATE GFC0075 CME-45C 90% 11/21/2022								DRILL METHOD Mud Rotary				HAMMER TYPE Automatic					
DRILLER Edmondson, J. M.				START DATE 03/25/24				COMP. DATE 03/25/24				SURFACE WATER DEPTH N/A					
ELEV (ft)	DRIVE ELEV (ft)	DEPTH (ft)	BLOW COUNT			BLOWS PER FOOT					SAMP. NO.	MOI	LOG	SOIL AND ROCK DESCRIPTION			
			0.5ft	0.5ft	0.5ft	0	25	50	75	100							
-15						Match Line											
	-17.5	78.1		80	100/0.4									COASTAL PLAIN GRAY SILTY SAND, SATURATED (PEEDEE FORMATION) (continued)			
-20																	
	-22.5	83.1		39	67 33/0.2												
-25																	
	-27.5	88.1		100/0.4													
-30														COASTAL PLAIN SEDIMENTARY ROCK HARD GRAY SANDY LIMESTONE (PEEDEE FORMATION)			
	-32.5	93.1		13	18 34												
-35																	
	-37.5	98.1		25	38 41												
-40																	
	-42.5	103.1		100/0.3													
														Boring Terminated at Elevation -42.8 ft IN VERY DENSE SAND			

GEOTECHNICAL BORING REPORT  
BORE LOG



NCDOT BORE DOUBLE SF530168\_GEO\_BRDG.GPJ NC\_DOT.GDT 4/2/24